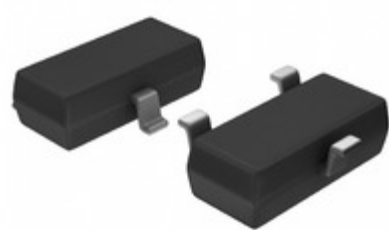




LAPIS Kioxia



YIC International Co., Limited.

Image may be representation.
See specs for product details.

DTC123JKAT146

Hersteller-Teilenummer:	DTC123JKAT146
Hersteller / Marke:	LAPIS Semiconductor
Teil der Beschreibung:	TRANS PREBIAS NPN 200MW SMT3
Datenblätter:	DTC123JKAT146.pdf
RoHs Status:	Bleifrei / RoHS-konform
Lagerzustand:	New original, 33380 pcs Stock Available.
Liefern von:	Hong Kong
Versandweg:	DHL/Fedex/TNT/UPS/EMS

Spezifikationen

Teilenummer	DTC123JKAT146
Hersteller	LAPIS Semiconductor
Beschreibung	TRANS PREBIAS NPN 200MW SMT3
Kategorie	Diskrete Halbleiterprodukte > Transistoren-Bipolar
Teilstatus	33380 pcs Stock
Serie	-
Befestigungsart	Surface Mount
Leistung - max	200mW
Verpackung / Gehäuse	TO-236-3, SC-59, SOT-23-3
Supplier Device-Gehäuse	SMT3
Transistor-Typ	NPN - Pre-Biased
Strom - Kollektor (Ic) (max)	100mA
Spannung - Kollektor-Emitter-Durchbruch (max)	50V
VCE Sättigung (Max) @ Ib, Ic	300mV @ 250µA, 5mA
Strom - Collector Cutoff (Max)	500nA
DC Stromgewinn (HFE) (Min) @ Ic, VCE	80 @ 10mA, 5V
Frequenz - Übergang	250MHz
Widerstand - Base (R1) (Ohm)	2.2k
Widerstand - Emitter-Basis (R2) (Ohm)	47k
Verpackung	Tape & Reel (TR)

DTC123JKAT146 ist neu im Original, Suche DTC123JKAT146 Datenblätter, PDF, Inventar bei Y-IC.com Online, Bestellen Sie DTC123JKAT146 LAPIS Semiconductor mit Garantie und Vertrauen. Anfrage DTC123JKAT146: Info@Y-IC.com

Sie können auch interessiert sein:

Not Actual Photo YIC International Co., Limited.

DTC123JKA-T146
ROHM

Not Actual Photo YIC International Co., Limited.

DTC123JM
ROHM
DTC123JM ROHM

Not Actual Photo YIC International Co., Limited.

DTC123JKA
ROHM
DTC123JKA ROHM

DTC123JM3T5G
AMI Semiconductor / ON Semiconductor
TRANS PREBIAS NPN 260MW SOT723

Not Actual Photo YIC International Co., Limited.

DTC123JKAF T146
Pb-free
Pb-free SOT-23

Not Actual Photo YIC International Co., Limited.

DTC123JKA T146
ROHM
DTC123JKA T146 ROHM

DTC123JKA-TP
Micro Commercial Components (MCC)
TRANS PREBIAS NPN 200MW SOT23-3L

LAPIS Kioxia

DTC123JM FS6T2L
LAPIS Semiconductor
DTC123JM FS6T2L ROHM

heiße Teile

Mehr

DTC115TKA	DTC115TKAT146	DTC115TM	DTC115TMT2L	DTC115TU
DTC115TUA	DTC115TUAT106	DTC123EE	DTC123EET1	DTC123EETL
DTC123EK	DTC123EKA	DTC123EKAT146	DTC123EM	DTC123EMT2L
DTC123EU	DTC123EUA	DTC123EUAFST106	DTC123EUAT106	DTC123JE
DTC123JET1	DTC123JET1G	DTC123JETL	DTC123JK	DTC123JKA
DTC123JM	DTC123JM3T5G	DTC123JMT2L	DTC123JSA	DTC123JU
DTC123JUA	DTC123JUAT106	DTC123JUBTL	DTC123TK	DTC123TKA
DTC123TKAT146	DTC123YE	DTC123YEB	DTC123YEBTL	DTC123YK
DTC123YKA	DTC123YKAT146	DTC123YSA	DTC123YSATP	DTC123YU
DTC123YUA	DTC123YUAFRAT106	DTC123YUAT106	DTC123YUAT146	DTC124ECA

Contact us: Info@Y-IC.com

HINZUFÜGEN: Einheit A5-B5 Nr.509, 5 / F Sing Win Fabrikgebäude, 15-17 Shing Yip St, Kwun Tong, Kowloon, HongKong.

Copyright © 2019 YIC International Co., Limited