



LAPIS Semiconductor

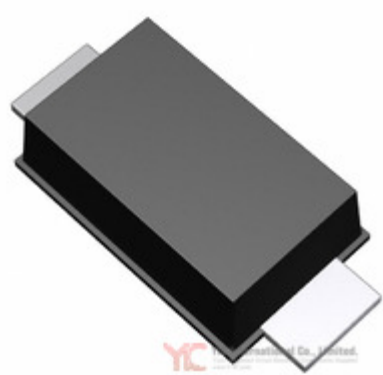


Image may be representation.  
See specs for product details.

## RB160M-90TR

<b>Hersteller-Teilenummer:</b>	RB160M-90TR
<b>Hersteller / Marke:</b>	LAPIS Semiconductor
<b>Teil der Beschreibung:</b>	DIODE SCHOTTKY 90V 1A PMDU
<b>Datenblätter:</b>	<a href="#">RB160M-90TR.pdf</a>
<b>RoHs Status:</b>	Bleifrei / RoHS-konform
<b>Lagerzustand:</b>	New original, 74010 pcs Stock Available.
<b>Liefern von:</b>	Hong Kong
<b>Versandweg:</b>	DHL/Fedex/TNT/UPS/EMS

### Spezifikationen

Teilenummer	RB160M-90TR
Hersteller	LAPIS Semiconductor
Beschreibung	DIODE SCHOTTKY 90V 1A PMDU
Kategorie	<a href="#">Diskrete Halbleiterprodukte &gt; Dioden-Gleichrichter-</a>
Teilstatus	74010 pcs Stock
Serie	-
Befestigungsart	Surface Mount
Verpackung / Gehäuse	SOD-123F
Supplier Device-Gehäuse	PMDU
Diodentyp	Schottky
Strom - Richt (Io)	1A
Spannung - Forward (Vf) (Max) @ If	730mV @ 1A
Strom - Sperrleckstrom @ Vr	100µA @ 90V
Spannung - Sperr (Vr) (max)	90V
Geschwindigkeit	Fast Recovery = 200mA (Io)
Betriebstemperatur - Anschluss	150°C (Max)
Kapazität @ Vr, F	-
Verpackung	Tape & Reel (TR)

RB160M-90TR ist neu im Original, Suche RB160M-90TR Datenblätter, PDF, Inventar bei Y-IC.com Online, Bestellen Sie RB160M-90TR LAPIS Semiconductor mit Garantie und Vertrauen. Anfrage RB160M-90TR: [Info@Y-IC.com](mailto:Info@Y-IC.com)

Sie können auch interessiert sein:

**RB160M-60TR**  
LAPIS Semiconductor  
DIODE SCHOTTKY 60V 1A  
PMDU

**RB160MM-30 TR**  
ROHM  
ROHM SOD-123

**RB160MM-30TF**  
ROHM  
RB160MM-30TF ROHM

**RB160M-90 TR**  
ROHM  
RB160M-90 TR ROHM

**RB160MM-30**  
ROHM  
RB160MM-30 ROHM

**RB160M6-0TR**  
ROHM  
ROHM SOD123

**RB160M-90TFTR**  
ROHM  
RB160M-90TFTR ROHM

**RB160M30TR**  
ROHM  
ROHM SOD123

### heiße Teile

Mehr

- |                |               |               |                |               |
|----------------|---------------|---------------|----------------|---------------|
| RB160L-60LTE25 | RB160L-60TE25 | RB160L-90     | RB160L-90TE25  | RB160L-90TF   |
| RB160LAM-40    | RB160LAM-40TF | RB160LAM-90   | RB160M-20      | RB160M-30     |
| RB160M-30TR    | RB160M-30ULTR | RB160M-40     | RB160M-40F     | RB160M-40G    |
| RB160M-40GTR   | RB160M-40TR   | RB160M-50     | RB160M-50F     | RB160M-50TR   |
| RB160M-60      | RB160M-60G    | RB160M-60TFTR | RB160M-60TR    | RB160M-90     |
| RB160MM-30     | RB160MM-30TF  | RB160MM-40    | RB160MM-40TF   | RB160MM-50    |
| RB160MM-50TF   | RB160MM-60    | RB160MM-60TF  | RB160MM-90     | RB160MM-90TF  |
| RB160MP-60     | RB160S-40     | RB160SS-20T2R | RB160SS-40     | RB160SS-40T2R |
| RB160V-40TR    | RB160VA-20    | RB160VA-40    | RB160VA-40FJTR | RB160VA-40TR  |
| RB160VA-60     | RB160VA-60TR  | RB160VAM-40   | RB160VAM-40TR  | RB160VAM-60   |

Contact us: [Info@Y-IC.com](mailto:Info@Y-IC.com)

HINZUFÜGEN: Einheit A5-B5 Nr.509, 5 / F Sing Win Fabrikgebäude, 15-17 Shing Yip St, Kwun Tong, Kowloon, HongKong.

Copyright © 2019 YIC International Co., Limited