

Panasonic

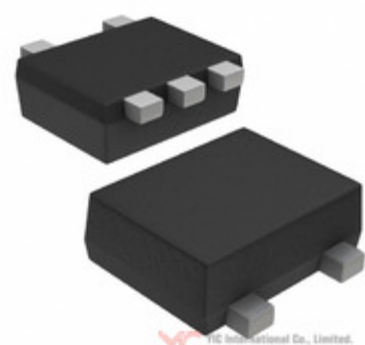


Image may be representation.
See specs for product details.

DMC961040R

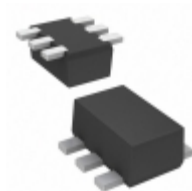
| | |
|--------------------------------|---|
| Hersteller-Teilenummer: | DMC961040R |
| Hersteller / Marke: | Panasonic |
| Teil der Beschreibung: | TRANS PREBIAS DUAL NPN SSMINI5 |
| RoHs Status: | Bleifrei / RoHS-konform |
| Lagerzustand: | New original, 5950 pcs Stock Available. |
| Liefern von: | Hong Kong |
| Versandweg: | DHL/Fedex/TNT/UPS/EMS |

Spezifikationen

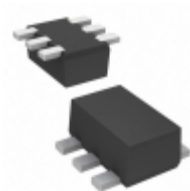
| | |
|---|---|
| Teilenummer | DMC961040R |
| Hersteller | Panasonic |
| Beschreibung | TRANS PREBIAS DUAL NPN SSMINI5 |
| Kategorie | Diskrete Halbleiterprodukte > Transistoren-bipolare |
| Teilstatus | 5950 pcs Stock |
| Serie | - |
| Befestigungsart | Surface Mount |
| Leistung - max | 125mW |
| Verpackung / Gehäuse | SOT-665 |
| Supplier Device-Gehäuse | SSMini5-F4-B |
| Transistor-Typ | 2 NPN - Pre-Biased (Dual) |
| Strom - Kollektor (Ic) (max) | 100mA |
| Spannung - Kollektor-Emitter-Durchbruch (max) | 50V |
| VCE Sättigung (Max) @ Ib, Ic | 250mV @ 500µA, 10mA |
| Strom - Collector Cutoff (Max) | 500nA |
| DC Stromgewinn (HFE) (Min) @ Ic, VCE | 80 @ 5mA, 10V |
| Frequenz - Übergang | - |
| Widerstand - Base (R1) (Ohm) | 10k |
| Widerstand - Emitter-Basis (R2) (Ohm) | 47k |
| Verpackung | Tape & Reel (TR) |

DMC961040R ist neu im Original, Suche DMC961040R Datenblätter, PDF, Inventar bei Y-IC.com Online, Bestellen Sie DMC961040R Panasonic mit Garantie und Vertrauen. Anfrage DMC961040R: Info@Y-IC.com

Sie können auch interessiert sein:



DMC904F00R
Panasonic
TRANSISTOR NPN 20V
SSMINI6-F3-B



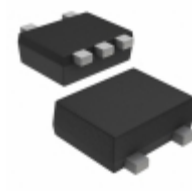
DMC964030R
Panasonic
TRANS PREBIAS DUAL NPN
SSMINI6



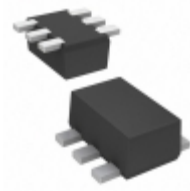
DMC9610M0R
Panasonic
TRANS PREBIAS DUAL NPN
SSMINI5



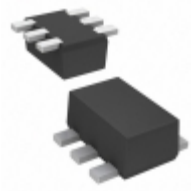
DMC961010L
Panasonic
DMC961010L Panasonic



DMC961020R
Panasonic
TRANS PREBIAS DUAL NPN
SSMINI5



DMC964010R
Panasonic
TRANS PREBIAS DUAL NPN
SSMINI6



DMC964040R
Panasonic
TRANS PREBIAS DUAL NPN
SSMINI6



DMC964020R
Panasonic
TRANS PREBIAS DUAL NPN
SSMINI6

heiße Teile

Mehr

| | | | | |
|-----------------|-------------------|-----------------|--------------------|-------------------|
| ⊛ DMC3032LSD-13 | ↔ DMC3032LSD-13-F | ⇒ DMC3035LSD-13 | D DMC3035LSD-13-01 | ↗ DMC3035LSD-13-F |
| ⊣ DMC3036LSD-13 | ⊛ DMC3071LVT | D DMC3112SVT | ⇒ DMC3400SDW-7 | ↗ DMC364A30R |
| ⊛ DMC4015SSD | ⊣ DMC4028SSD | ⊛ DMC4028SSD-13 | ↔ DMC4029SK4 | ↗ DMC4029SK4-13 |
| D DMC4029SSD | ⊛ DMC4040SDS-13 | ⊣ DMC4040SSD | ⊛ DMC4040SSD-13 | ↗ DMC4040SSD-13-F |
| ⇒ DMC4040SSDQ | ↔ DMC4047LSD | ⊛ DMC4047LSD-13 | ⊣ DMC4050SSD | ↗ DMC4050SSD-13 |
| ↔ DMC4050SSDQ | ⇒ DMC501010R | D DMC561010R | ⊛ DMC564010R | ⊣ DMC5640L0R |
| ⊛ DMC566050R | D DMC6003-003 | ⇒ DMC6003B03 | ↔ DMC6040SSD | ↗ DMC6040SSD-13 |
| ⊣ DMC6040SSDQ | ⊛ DMC904010R | ↔ DMC904F00R | ⇒ DMC961010L | ↗ DMC961010R |
| ⊛ DMC961020R | ⊣ DMC9610M0R | ⊛ DMC964010R | D DMC964020R | ↗ DMC964030R |
| ↔ DMC964040R | ⊛ DMC964050R | ⊣ DMC964060R | ⊛ DMC964070R | ↗ DMC9640N0R |

Contact us: Info@Y-IC.com

HINZUFÜGEN: Einheit A5-B5 Nr.509, 5 / F Sing Win Fabrikgebäude, 15-17 Shing Yip St, Kwun Tong, Kowloon, HongKong.

Copyright © 2019 YIC International Co., Limited