

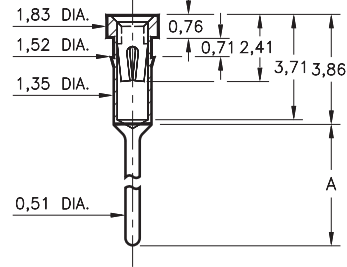
PIN RECEPTACLES

FOR 0,38 - 0,64 DIAMETER PINS

1005/1013/8898

XXXX-0-15-XX-3X-XX-04-0

Press-fit in 1,45 mounting hole
Annealed brass shell for auto-clinching *



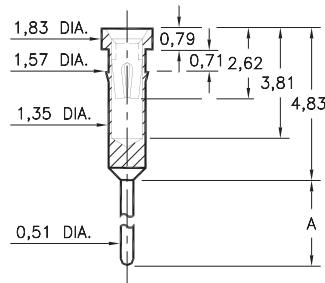
Basic Part Number	Length A
1005-0	3,51
1013-0	4,19
8898-0	5,69

* NOTE: 8898 is not annealed & not suitable for auto-clinching

0145/0146

014X-0-15-XX-30-XX-04-0

Press-fit in 1,5 mounting hole

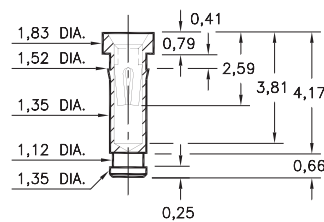


Basic Part Number	Length A
0145-0	7,62
0146-0	10,41

4378

4378-0-15-XX-30-XX-10-0

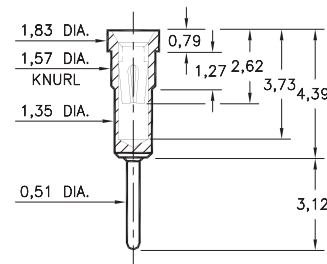
Press-fit in 1,45 mounting hole



0556

0556-0-15-XX-30-XX-04-0

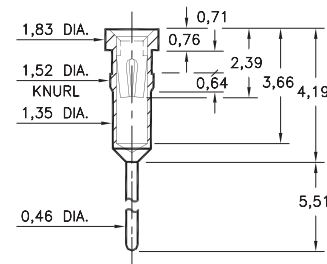
Press-fit in 1,5 mounting hole



1103

1103-0-15-XX-30-XX-04-0

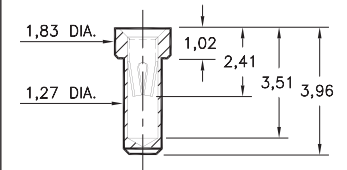
Press-fit in 1,45 mounting hole



9234

9234-0-15-XX-30-XX-10-0

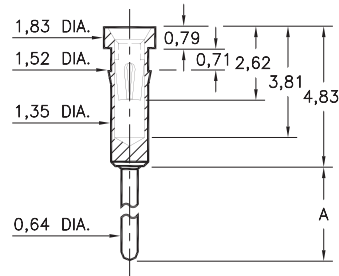
Solder mount in 1,32 min. mounting hole



0136/37/38/39/41/48/52

01XX-0-15-XX-30-XX-04-0

Press-fit in 1,45 mounting hole

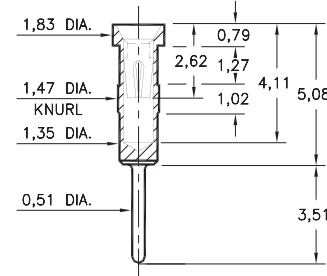


Basic Part Number	Length A
0136-0	30,86
0137-0	14,22
0138-0	5,33
0139-0	16,13
0141-0	17,78
0148-0	11,56
0152-0	10,41

0447

0447-0-15-XX-30-XX-04-0

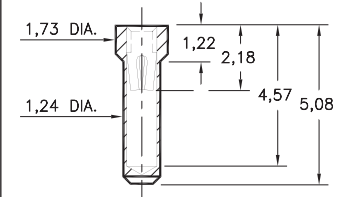
Press-fit in 1,42 mounting hole



5660

5660-0-15-XX-30-XX-10-0

Solder mount in 1,3 min. mounting hole



SPECIFICATIONS:

Shell Material: Brass Alloy 360, 1/2 Hard

Contact Material: Beryllium Copper Alloy 172, HT

Dimensions: Millimeters

Tolerances On: Lengths: ± 0,13

Diameters: ± 0,051

Angles: ± 2°



ORDER CODE: XXXX - X - 15 - XX - XX - XX - XX - 0

BASIC PART #

SPECIFY SHELL FINISH:

- 01 5,08µm TIN/LEAD OVER NICKEL
- ◆ 80 5,08µm TIN OVER NICKEL (RoHS)
- ◆ 15 0,25µm GOLD OVER NICKEL (RoHS)

SPECIFY CONTACT FINISH:

- 02 2,54µm TIN/LEAD OVER NICKEL
- ◆ 84 2,54µm TIN OVER NICKEL (RoHS)
- ◆ 27 0,76µm GOLD OVER NICKEL (RoHS)

SELECT CONTACT:

#30 or #32 CONTACT (DATA ON PAGE 253)

(For alternate contact choices, see groups B and C on page 248)

