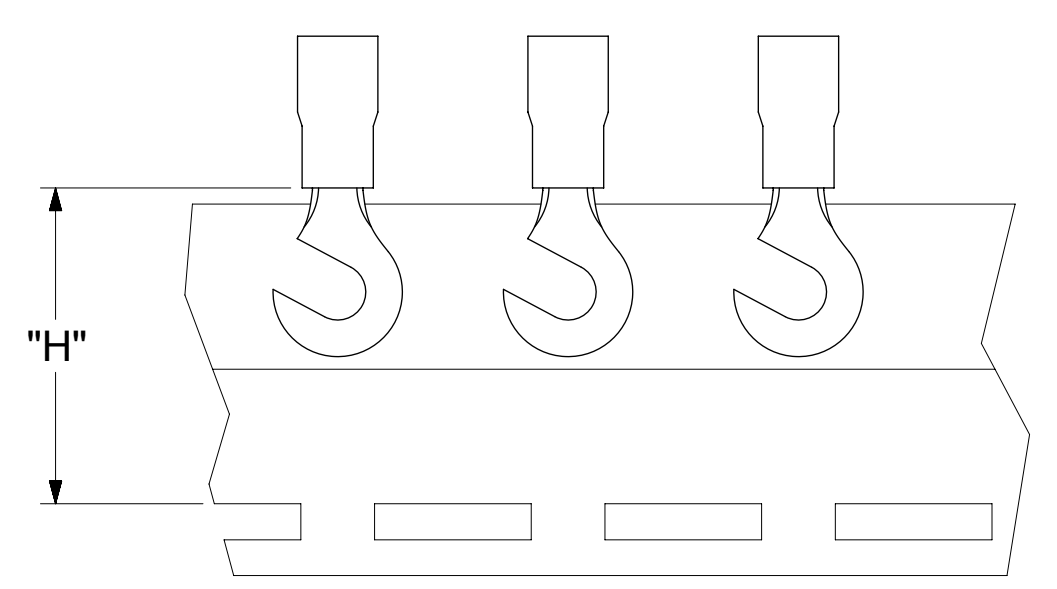
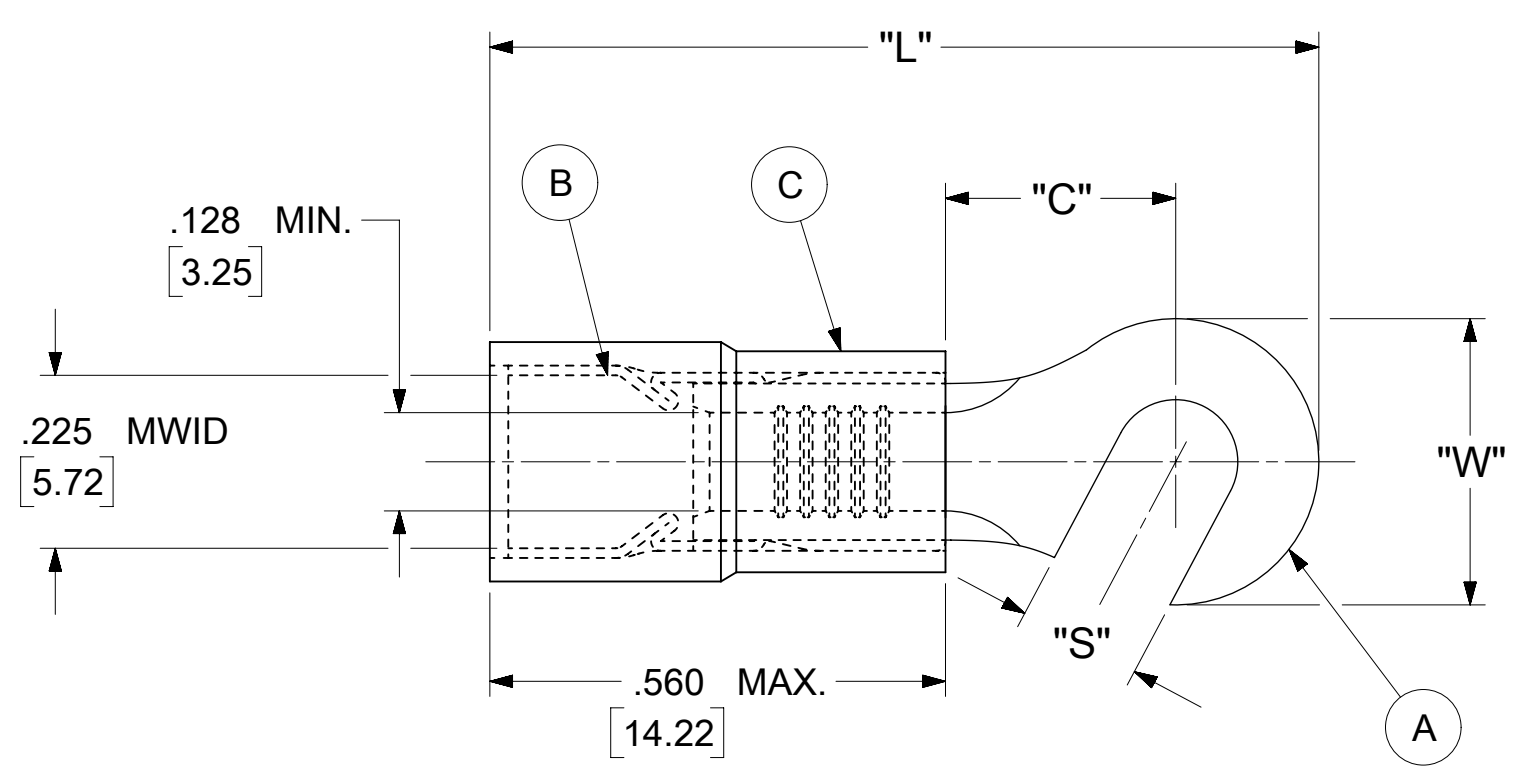


LOOSE PIECE		TAPE MOUNTED		SPECIFICATIONS					
MATERIAL NUMBER	ENGINEERING NUMBER	MATERIAL NUMBER	ENGINEERING NUMBER	STUD SIZE	"S" ±.005 [0.13]	"W" ±.010 [0.25]	"C" MIN.	"L" MAX.	"H"
191830019	C-811-10	191830020	C-811-10T	10	.198 [5.03]	.372 [9.45]	.303 [7.70]	1.081 [27.46]	.980 [24.89]



PARTS ON TAPE

NOTES:

- MATERIAL:
 - (A). TERMINAL: COPPER (STOCK THICKNESS .040±.001 [1.02])
 - PLATING: ELECTRO-TIN (.0003 MIN.)
 - (B). TIN-PLATED BRASS FUNNEL FERRULE
 - (C). INSULATION: NYLON (COLOR CODED YELLOW)
- MWID: MAXIMUM WIRE INSULATION DIAMETER
- WIRE SIZE: 12 -10 AWG
4.0 -6.0 MM²
- "UL" LISTING #E32244
"CSA" LISTING #18689
- ALL DIMENSIONS IN INCHES/[MM].
- PARTS ARE ROHS COMPLIANT.
- DIMS. SHOWN ARE FOR REFERENCE ONLY.

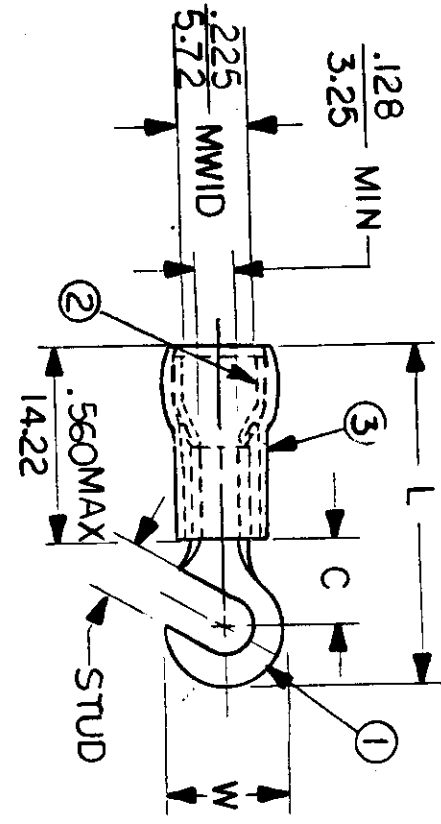
SYMBOLS	THIS DRAWING CONTAINS INFORMATION THAT IS PROPRIETARY TO MOLEX ELECTRONIC TECHNOLOGIES, LLC AND SHOULD NOT BE USED WITHOUT WRITTEN PERMISSION					
	DIMENSION UNITS	SCALE		CURRENT REV DESC: MIGRATION TO ECTR/NX		
∇ = 0	INCH/MM	NTS		EC NO: 621540 DRWN: ABENJAMINLW 2019/07/24 CHK'D: GROJAS01 2019/07/29 APPR: JMACNEIL 2019/08/05		
∇ = 0	GENERAL TOLERANCES (UNLESS SPECIFIED)					
∇ = 0		MM	INCH	INITIAL REVISION: DRWN: JJ 1984/11/12 APPR: JMACNEIL 2019/08/05		
∇ = 0	4 PLACES	± ---	± ---			
∇ = 0	3 PLACES	± ---	± .005	PRODUCT CUSTOMER DRAWING		
∇ = 0	2 PLACES	± 0.13	± .01			
∇ = 0	1 PLACE	± 0.25	± ---	DOCUMENT NUMBER: 191830013 DOC TYPE: PSD DOC PART: 000 REVISION: A		
∇ = 0	0 PLACES	± ---	± ---			
∇ = 0	ANGULAR TOL	± 0.5 °		MATERIAL NUMBER: SEE TABLE CUSTOMER: GENERAL MARKET SHEET NUMBER: 1 OF 1		
∇ = 0	DRAFT WHERE APPLICABLE MUST REMAIN WITHIN DIMENSIONS					
∇ = 0	THIRD ANGLE PROJECTION		DRAWING	SERIES	C-SIZE 19183	

NOTES:

- ① MAT'L: COPPER (STOCK TKN. $\frac{.040}{.102}$)
 - ② PLATING: ELECTRO TIN (.0003 MIN)
 - ③ TIN-PLATED BRASS FUNNEL FERRULE
 - ④ NYLON INSULATION (COLOR CODED YELLOW)
- STUD SIZES: ($\pm .005$)
- 02 = .094
 04 = .119
 06 = .146
 08 = .173
 10 = .198
 14 = .265
 56 = .328
 38 = .390

ALL DIMENSIONS = $\frac{\text{INCHES}}{\text{MM}}$

(MWID) = DENOTES MAXIMUM WIRE INSULATION DIAMETER



FILE NO. C-CD-801-02

PART NUMBER	"W" ±.010	"C" MIN.	"L" MAX.	SCALE: NTS	DATE	TITLE:	DIMENSIONAL TOLERANCES UNLESS OTHERWISE SPECIFIED	
							FRAC.	DEC.
C-811 -	$\frac{.372}{9.45}$	$\frac{.303}{7.70}$	$\frac{1.081}{27.46}$	DRWN. BY: JJ	11-12-84	HOOK TONGUE TERMINAL AVIKRIMP 800-SERIES	±	±
C-899 -	$\frac{.533}{13.54}$	$\frac{.393}{9.98}$	$\frac{1.259}{31.98}$	CHKD. BY: GZ	11-26-84		DWG. NO. A	CUSTOMER DWG

