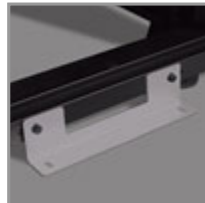


## 42U SmartRack Standard-Depth Rack Enclosure Cabinet, Threaded 10-32 Mounting Holes with doors & side panels

MODEL NUMBER: SR42UB1032



### Description

The SR42UB1032 houses 3000 lb of standard 19-inch rack equipment in 42U. Its front and rear pairs of vertical rails have threaded 10-32 mounting holes that are adjustable in quarter-inch increments from 4 to 37 inches. Adjustment is quick and an easy-view depth index ensures consistent rail placement without requiring time-consuming measurements. Each rack space within the enclosure is numbered for ready reference.

The SR42UB1032 features a massive front-to rear-ventilation capacity that meets or exceeds server manufacturer requirements. Its integrated baying tabs make it easy to combine multiple enclosures in rows for data center applications. This enclosure is also compatible with hot-aisle/cold-aisle configurations.

With its locking, reversible, removable front and rear doors, and locking, removable side panels, the SR42UB1032 provides ultimate equipment safety. The side panels are half size for ease of removal and reinstallation. The split rear door design allows the enclosure to be placed closer to a wall. The SR42UB1032 meets all requirements toward PCI DSS compliance.

The top panel of the SR42UB1032 is vented to help remove warm air from the enclosure and draw in cool air by convection. The top panel includes ports for cable routing, and can be quickly removed without tools. To facilitate cable access, the SR42UB1032 is open-bottom.

All components of the SR42UB1032 are grounded to the enclosure frame. Front and rear threaded grounding points are provided for connection to the facility earth ground. The removable front and rear doors feature quick-release ground wires.

### Highlights

- 42U SmartRack enclosure with doors and side panels
- 4 interior vertical posts with threaded 10-32 mounting holes
- Standard 24" (600mm) width and 42" (1050mm) depth for optimizing floor space
- Ships fully assembled
- Massive front to rear ventilation capacity
- 3000 lb stationary / 2250 lb rolling load capacity
- Locking, removable, reversible front and rear doors
- Locking, removable side panels keyed alike with doors
- Pre-installed casters and leveling feet
- Rolls through standard 7 foot doorway
- Meets all enclosure requirements towards PCI DSS (Payment Card Industry Data Security Standard) Compliance

### Package Includes

- SR42UB1032 Rack Enclosure
- (4) side panels
- (4) side panel locks
- (2) door & side panel keys
- Mounting Hardware
- Owner's Manual

To simplify deployment, the SR42UB1032 comes with preinstalled casters that enable it to be easily maneuvered into the desired location, where it can be secured by adjusting the preinstalled levelers. Note: the casters are intended for minor position adjustments and are not designed for moving the enclosure over long distances.

The SR42UB1032 comes with a 5-year product warranty. As part of the SmartRack family, the SR42UB1032 is compatible with Tripp Lite's extensive range of rackmount accessories, enabling you to customize your solution to meet any requirement.

## Features

- Ships fully assembled for rapid deployment and roll into place on heavy-duty pre-installed casters (casters are removable)
- Front and rear sets of equipment mounting rails adjust in 1/4" increments. Adjustment is quick and convenient. The easy-view depth index ensures consistent rail placement without requiring time-consuming measurements.
- Toolless accessory mounting rails (2 rails per enclosure) include slots for quick installation of compatible PDUs and vertical cable managers. Mounting slots are arranged in an industry-standard pattern compatible with a wide variety of accessories. Each rail can accommodate two vertical PDUs or cable managers side-by-side (four items per enclosure).
- Textured powder coat finish for tough resistance to environmental concerns such as deployment in warehouses.
- Massive front to rear ventilation capacity. 65+% open space in door perforation pattern meets or exceeds server manufacturer requirements.
- Maximum usable internal depth of 37 inches/94 cm (front to rear rail).
- Weight ratings of 3000 lb stationary and 2250 lb rolling.
- Front door is locking, reversible and removable.
- Rear doors are locking and reversible. Split rear door design reduces clearance requirements for service entry allowing the enclosure to be placed closer to a wall.
- Locking removable side panels are 'half size' to make them smaller and lighter improving ease of installation and servicing. Two side panels per side (4 panels total). Side panels are keyed alike to the front and rear doors.
- Built in baying tabs allow enclosures to be combined securely in rows. Center-to-center width can be set at 600mm or 24" to match standard data center floor tiles.
- Leveling feet extend to allow enclosure to be positioned on uneven floors. Levelers are removable.
- Compact design allows the enclosure to roll through standard height commercial doorways.
- Convenient grounding system. All components are grounded to the enclosure frame which includes multiple connections for facility ground. Front and rear doors include quick-release ground wires.
- Open bottom for cable access.
- Top panel has generous cable access holes. Panel can be removed toollessly in seconds without having to disconnect cables first.



- Included stabilizing brackets are used for shipment and can be reattached at the bottom of the enclosure frame on the inside or outside of the rack.
- Meets all enclosure requirements towards PCI DSS (Payment Card Industry Data Security Standard) Compliance
- Compatibility with airflow optimization accessories as well as cable management accessories.

## Specifications

OVERVIEW	
UPC Code	037332175359
PHYSICAL	
Rack Height (U Spaces)	42
Maximum Device Depth (in.)	37
Maximum Device Depth (cm)	93.98
Minimum Device Depth (in.)	4
Minimum Device Depth (cm)	10.16
Shipping Dimensions (hwd / in.)	77.50 x 43.00 x 24.00
Shipping Dimensions (hwd / cm)	196.85 x 109.22 x 60.96
Shipping Weight (lbs.)	336.00
Shipping Weight (kg)	152.41
Unit Dimensions (hwd / in.)	78.5 x 23.63 x 43
Unit Dimensions (hwd / cm)	199.39 x 60.02 x 109.22
Unit Weight (lbs.)	286
Unit Weight (kg)	129.73
Color	Black
Weight Capacity - Stationary (lbs.)	3000
Weight Capacity - Rolling (lbs.)	2250
Weight Capacity - Stationary (kg)	1,361
Weight Capacity - Rolling (kg)	1,021
Factory Preset Rack Depth (in.)	27.75
Factory Preset Rack Depth (cm)	70.5
Factory Preset Rack Depth (mm)	705
Maximum Device Depth (mm)	940
Minimum Device Depth (mm)	102



**Tripp Lite**  
1111 W. 35th Street  
Chicago, IL 60609 USA  
Telephone: 773.869.1234  
[www.tripplite.com](http://www.tripplite.com)

<b>SPECIAL FEATURES</b>	
Grounding Lug	Front and back door frames
<b>CERTIFICATIONS</b>	
Certifications	UL60950; RoHS; CE
Approvals	EIA/ECA-310-E
<b>WARRANTY</b>	
Product Warranty Period (Worldwide)	5-year limited warranty

© 2018 Tripp Lite. All rights reserved. All product and company names are trademarks or registered trademarks of their respective holders. Use of them does not imply any affiliation with or endorsement by them. Tripp Lite has a policy of continuous improvement. Specifications are subject to change without notice. Tripp Lite uses primary and third-party agencies to test its products for compliance with standards. See a list of Tripp Lite's testing agencies: <https://www.tripplite.com/products/product-certification-agencies>