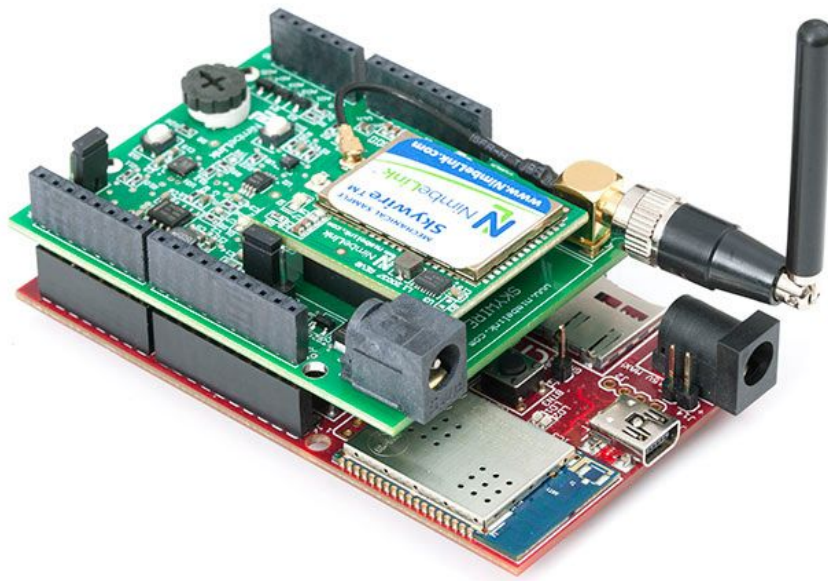


Microchip chipKIT™ WF32 Shield

User Manual

NimbeLink Corp

Updated: August 2016



© NimbeLink Corp. 2016. All rights reserved.

NimbeLink Corp. provides this documentation in support of its products for the internal use of its current and prospective customers. The publication of this document does not create any other right or license in any party to use any content contained in or referred to in this document and any modification or redistribution of this document is not permitted.

While efforts are made to ensure accuracy, typographical and other errors may exist in this document. NimbeLink reserves the right to modify or discontinue its products and to modify this and any other product documentation at any time.

All NimbeLink products are sold subject to its published Terms and Conditions, subject to any separate terms agreed with its customers. No warranty of any type is extended by publication of this documentation, including, but not limited to, implied warranties of merchantability, fitness for a particular purpose and non-infringement.

XBee is a registered trademark of Digi International, Inc

chipKIT is a trademark of Microchip Technology Incorporated

NimbeLink is a registered trademark, and Skywire is a trademark, of NimbeLink Corp. All trademarks, service marks and similar designations referenced in this document are the property of their respective owners.

[Introduction](#)

[Overview](#)

[Product Description](#)

[Additional Resources](#)

[Technical Specifications](#)

[Block Diagram](#)

[Pinout](#)

[Table 2.2.1 Shield Default Pinout](#)

[Getting Started](#)

[Operating Modes](#)

[UART Configuration](#)

[Sensor Connections](#)

[Required Hardware](#)

[Mounting the Shield](#)

[Skywire™ Placement](#)

[Programming the chipKIT](#)

[Viewing the Device Data](#)

[Troubleshooting](#)

1. Introduction

1.1 Overview

This document is the User Manual for the Skywire™ Sensor Shield when used with chipKIT WF32 development kit. Throughout the document Skywire Sensor Shield will often be referred to as 'the shield', although it may be referred to by its full name.

The NimbeLink Skywire™ modem is available with bundled data plans from leading cellular carriers. The Skywire™ cellular modem and antennas are sold separately.

Make sure you check NimbeLink's Skywire™ Sensor Shield product page for the most up to date information

1.2 Product Description

Connect the Microchip WF32 development platform to the Internet of Things (IoT) quickly and easily with NimbeLink's Skywire™ Sensor Shield. Whether you are a hobbyist or a developer preparing a product for launch, NimbeLink's shield and your choice of NimbeLink Skywire™ plug-in cellular modems will provide the cellular connectivity you need. With Cellular connectivity, several included sensors, and example code you can have your proof of concept up and running in minutes with a clear path to production.

- Skywire™ socket that supports 2G, 3G, and 4G modems
- NimbeLink's certified modems and bundled data plans can have you connected to the network faster than any other cellular solution
- Four sensors to demonstrate your IoT solution (Temperature, Acceleration, Pressure, and Humidity)
- Example code to upload sensor data to Verizon Thingspace.io dashboards

1.3 Orderable Parts

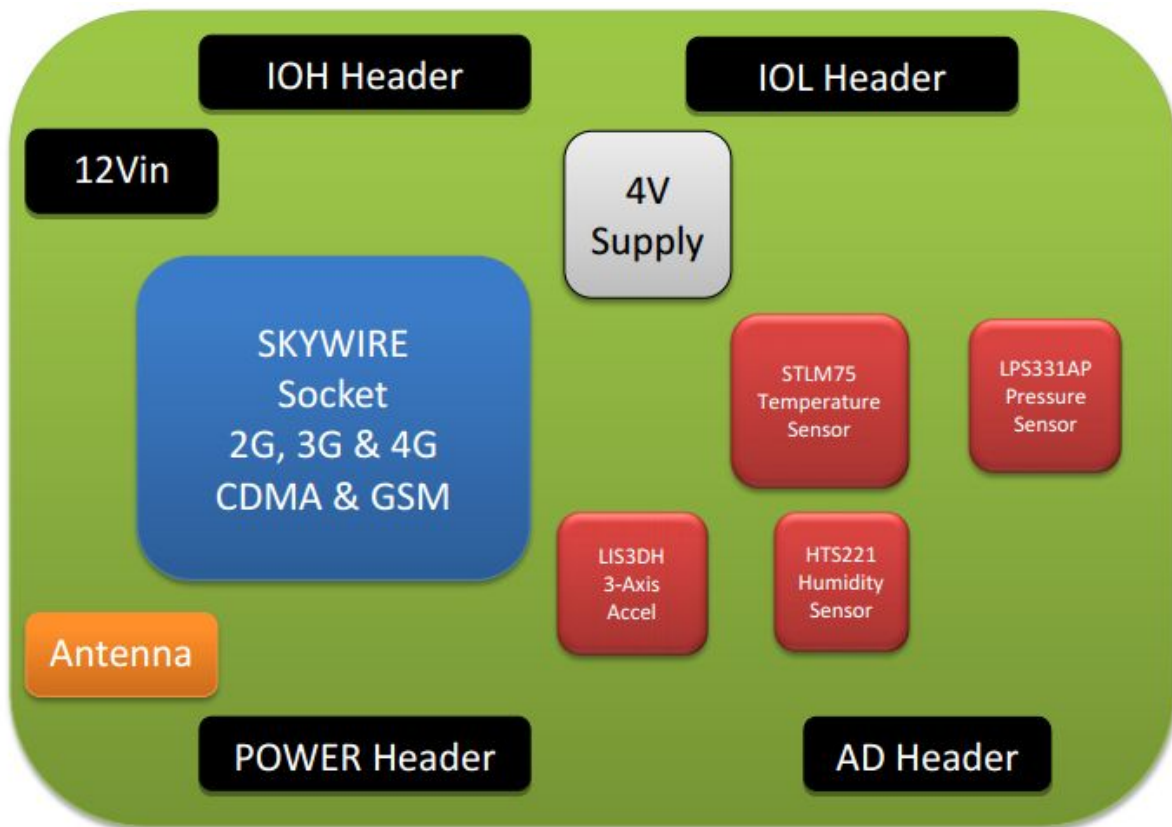
Orderable Device	Description	Manufacturer	Carrier	Network Type
NL-AB-ST-NCL	Skywire™ Sensor Shield (includes antenna and power supply)	NimbeLink		
NL-SW-1XRTT-V	Skywire™ 1xRTT Cellular Modem without data plan. 2G Modem.	NimbeLink	Verizon	2G CDMA 1xRTT
NL-SW-EVDO-V	Skywire™ EVDO Cellular Modem without data plan. 3G Modem.	NimbeLink	Verizon	3G CDMA EVDO
TG.30.8113	Cellular Antenna	Taoglas		
TDGL021	chipKIT WF32 IoT development kit	Microchip		

1.4 Additional Resources

- NimbeLink's [Skywire™ Sensor Shield Product Page](#)
- NimbeLink's [Skywire™ Sensor Shield Schematic](#)
- NimbeLink's [Skywire™ 2G 1xRTT Product Page](#)
- NimbeLink's [Skywire™ 3G GSM/HSPA+ Product Page](#)
- NimbeLink's [Skywire™ 3G CDMA/EVDO Product Page](#)
- Microchip [chipKIT WF32 Platform Page](#)

2. Technical Specifications

2.1 Block Diagram



2.2 Pinout

Table 2.2.1 Shield Default Pinout

Pin Name	Header	Shield Connection
IO0	IOL	Skywire™ DOUT
IO1	IOL	Skywire™ DIN
IO2	IOL	<i>No Connect</i>
IO3	IOL	Button 1
IO4	IOL	LM75 INT
IO5	IOL	LIS3DH INT1
IO6	IOL	HTS221 DRDY
IO7	IOL	LPS331 INT1
IO8	IOH	<i>No Connect</i>
IO9	IOH	Skywire™ Reset
IO10	IOH	Skywire™ DTR
IO11	IOH	Skywire™ RTS
IO12	IOH	Skywire™ ON/OFF
IO13	IOH	Skywire™ CTS
GND	IOH	GND
AREF	IOH	<i>No Connect</i>
SDA	IOH	I2C_SDA
SCL	IOH	I2C_SCL
All Pins	AD	LEDs/Analog Sensors
VIN	POWER	12 V Input
GND	POWER	GND
5V	POWER	5V Input (unused)
3V3	POWER	3.3V Input
RESET	POWER	<i>No Connect</i>
IOREF	POWER	Skywire™ Vref

3. Getting Started

3.1 Operating Modes

NimbeLink's Skywire™ Sensor Shield is designed to be compatible with the Microchip chipKIT WF32 board. The shield also provides headers to plug in additional shields to further the platform's functionality. The user must ensure the pins on expansion shields do not interfere with the pins of the Skywire Sensor Shield.

3.1.1 UART Configuration

By default the UART connection between the Skywire™ and the chipKIT board connects to UART1. The default debug interface also uses UART1 so it is important to avoid using this line for both communications. It is recommended that UART4 (Pins 39/40 on the chipKIT WF32 Board) be used for the debug UART in order to avoid interference. This can be done with an external Serial to USB cable, for example.

The Skywire™ defaults to an 115200 BAUD rate, 8 bit data, no parity, and 1 stop bit. The Data Terminal Ready (DTR) and Ready To Send (RTS) lines must be driven low from the WF32 to the modem.

3.1.2 Sensor Connections

The shield has four sensors connected to Analog/IO pins that can be polled by the chipKIT board.

The shield also has four sensors connected to the I2C interface coming from the chipKIT board. The shield provides 4.75K pullup resistors on the I2C interface. On the chipKIT board used in this startup guide, the I2C interface is on pins 45 (SCL) and 46 (SDA).

See the table below for details on each sensor.

Sensor	Function	Pin
PhotoTrans	Returns the amount of surrounding light, value = 0-1023	AD0
Button 1	A digital read of the pin returns a 1 for closed, a 0 for open	IO3
Button 2	A digital read of the pin returns a 1 for closed, a 0 for open	AD4
Potentiometer	Adjustable voltage divider changes output by rotating, value = 0-1023	AD5
HTS221	Humidity 0-100% RH	I2C
LIS3DH	3-Axis Accelerometer 2g/4g/8g/16g	I2C

LPS331	Pressure 260-1260mbar	I2C
STLM75	Temperature -55C to 125C	I2C

3.2 Required Hardware

This guide assumes the user has access to the following hardware:

- Skywire chipKIT Cellular Sensor Shield
- chipKIT WF32 Demo Board (or equivalent)
- 12 V power supply
- USB A to mini-B connector (for programming the chipKIT board)
- Cellular antenna
- Optional: USB-to-Serial cable (for debugging)

3.3 Mounting the Shield

Before mounting the shield, verify that the following jumpers in particular are in the correct positions as shown in the figure below:

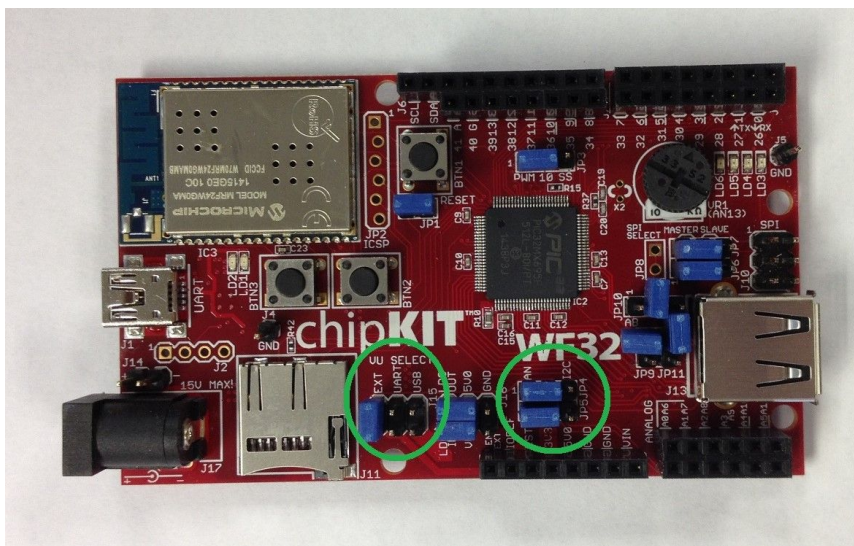


Figure 3-1: correct jumper positions for chipKIT board.

J15: jumper should be in the 'EXT' position. This allows the shield to be powered off of the chipKIT board's external 12 V supply port instead of the USB port.

JP4/JP5: jumpers should be in the 'AN' positions to disconnect the I2C bus from the analog sensor ports.

The Shield is designed to interface with the Arduino compatible headers on the chipKIT development board. To mount the shield, orient the pins correctly over the Arduino headers and press down on the shield until the shield is seated fully. There should be no unconnected pins below the shield.

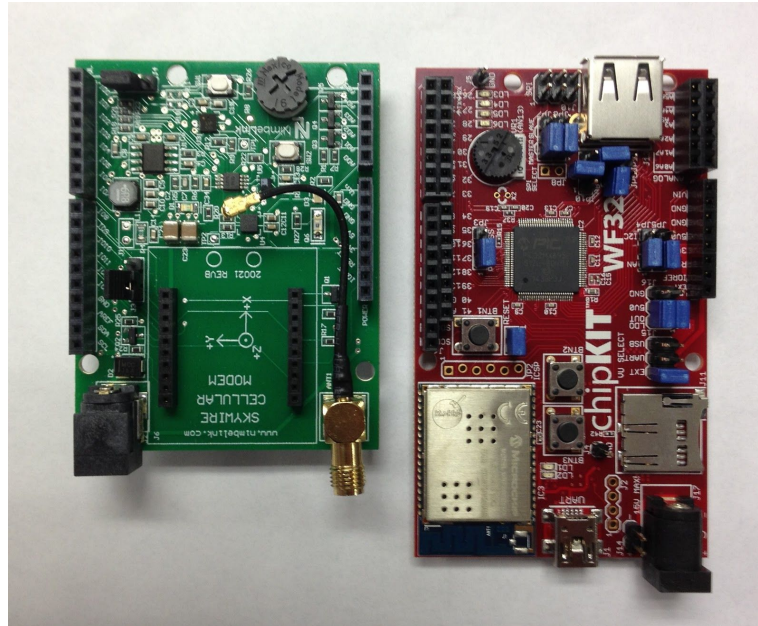


Figure 3-2: chipKIT board and Skywire Shield proper orientation

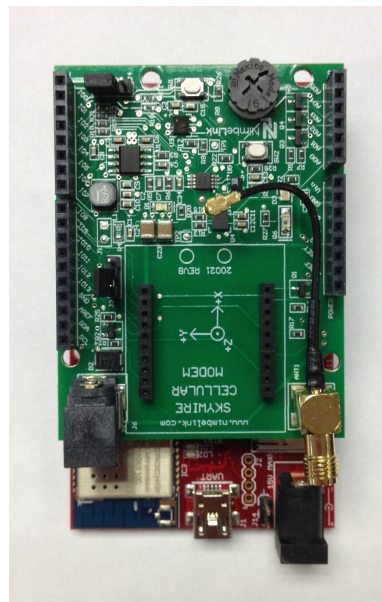


Figure 3-3: Skywire Shield mounted on chipKIT board

3.4 Skywire™ Placement

The Skywire Cellular modem is designed to be placed as shown below.



Figure 3-4: Skywire Sensor Shield with Skywire 3G EVDO Modem

To mount your Skywire™ Cellular modem follow these steps:

1. Gather the following:
 - a. Skywire™ Sensor Shield
 - b. Skywire™ Cellular Modem
 - c. U.FL extractor tool (Always use a U.FL extractor tool when placing or removing U.FL cables on the Skywire™ modem to avoid damaging the U.FL connectors).
2. Line up the Skywire™ cellular U.FL connector(s) with the circles inside the shield's Skywire™ socket footprint. Depending on the type of Skywire™ Modem there may be one or two U.FL connections.
3. Carefully seat your Skywire™ into the shield's Skywire™ socket (J6). Take care to ensure that the pins are correctly aligned. Failure to properly align the pins may damage your Skywire™!
4. Attach the U.FL cable to the U.FL connector marked X1 on the Skywire™ modem.

3.5 Programming the chipKIT board

To program the chipKIT board while the Skywire Shield is mounted, remove the jumpers from J3 and J4 on the shield to disconnect the Skywire modem from the serial communication lines used for programming. Then, download the chipKIT board software, MPIDE, from the chipKIT website:

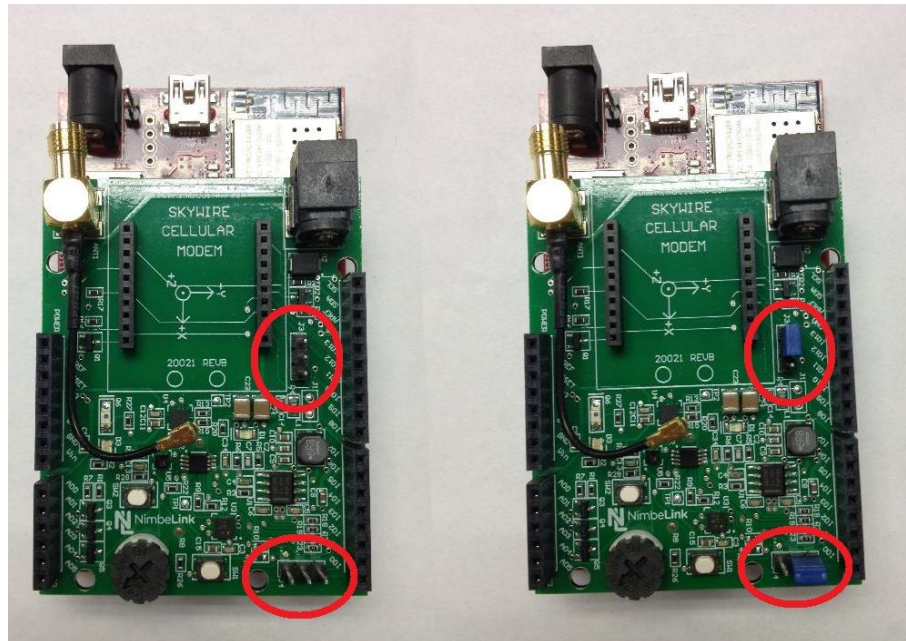
<http://chipkit.net/mpide>

and follow the steps below to program the chipKIT board:

- Follow the MPIDE installation guide referenced on the MPIDE download page ([Windows](#), [Mac](#), [Linux](#))
- Download the Skywire_chipKIT_Dweet.zip file from http://nimbelink.com/drivers/Skywire_chipKIT_Dweet.zip
- Extract the zip file to the MPIDE sketchbook folder, located by default in your “My Documents” directory
- Within MPIDE, open the extracted pde file: ‘File -> Open -> Skywire_chipKIT_Dweet -> Skywire_chipKIT_Dweet.pde’
- Remove jumpers from J3 and J4 on the shield
- Power the chipKIT board and shield using the external 12 V power jack
- Connect the chipKIT board to your computer via USB
- Within MPIDE: Select ‘Tools -> Serial Port -> COM#’ (where # corresponds with the COM port assigned to your chipKIT board)
- Select ‘Tools -> Board -> chipKIT board -> chipKIT WF32’
- Select the ‘Upload’ button
- Wait for the upload to finish. The LD1 and LD2 LEDs should be flashing during this process

Before running:

- Disconnect USB cable from the chipKIT board
- Unplug the power cord from the chipKIT board and shield
- Reconnect jumpers on J3 and J4



Left: programming configuration; Right: normal operation

3.6 Viewing the Device Data

Once your chipKIT board is programmed and has a mounted shield, the following steps can be used to view the data being posted to the cloud by your device:

- Make an account at <https://freeboard.io/> if you do not already have one
- Go to <https://freeboard.io/board/6Xxpac> and make a copy of the dashboard by clicking on the "Clone" button in the lower right corner
- Open the cloned dashboard and click on "skywire" under "Datasources"
- Replace the "Thing Name" field with your modem's MEID or IMEI and select "Save"
- Power on your chipKIT board and shield and wait for the green LED to start flashing on the shield

At this point, your dashboard widgets should begin updating in real-time as your device uploads its sensor data to dweet.io.

3.7 Troubleshooting

If you are unable to view your device's data on freeboard.io after going through the steps in the previous sections, try the following troubleshooting options:

- Make sure the shield has jumpers on J3 and J4 to allow the chipKIT board to send serial commands to the modem.
- If the shield's green LED is flashing, verify that the data is being uploaded to dweet.io by going to <https://dweet.io/get/latest/dweet/for/<thingname>>, where <thingname> is replaced by the MEID or IMEI of your modem. If your device's data is displayed there, check that the correct thing name is entered under the "Data Sources" section of your freeboard.io dashboard.
- **The following requires a USB-to-UART Serial cable:** If the green LED is not flashing, power off the chipKIT board and remove the shield. Then, place a wire in pin 40 on the chipKIT board and re-mount the shield. Connect the "GND" wire of the USB-to-Serial cable to J4 on the chipKIT board (ground) and the "RX" pin to the wire in pin 40 of the chipKIT board. Power on the chipKIT board and shield. Using a terminal program such as Tera Term or PuTTY, open a serial connection with 115200 BAUD, 8-bit, no parity, and 1 stop bit to view the debugging trace statements from the chipKIT board.
- **The following requires a Skywire Development Kit:** Follow the instructions at

<http://nimbelink.com/wp-content/uploads/2014/08/User-Manual-Skywire-Development-Kit.pdf>

to verify that your modem is activated and is able to connect to the cellular network.