

10 9 8 7 6 5 4 3 2 1

F

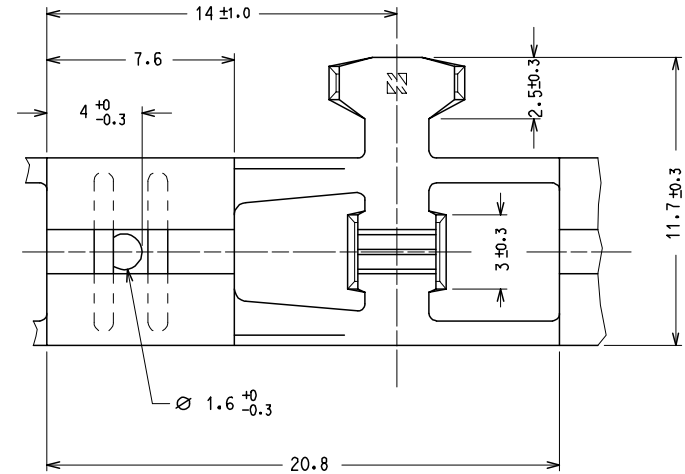
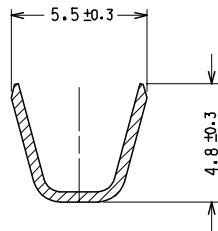
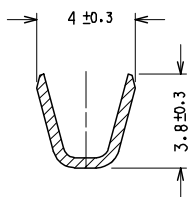
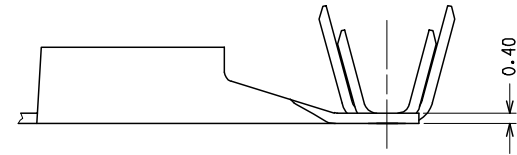
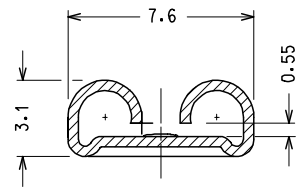
E

D

C

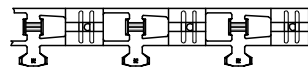
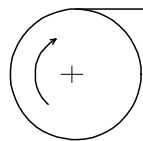
B

A



CARATTERISTICHE PRODOTTO SECONDO PS-94030-001
 PRODUCT CHARACTERISTICS ACCORDING TO PS-94030-002

SENSO DI AVANZAMENTO PER MINI APPLICATORE
 DIRECTION OFF TOP OF REEL



CODICE P/N	MATERIALE MATERIAL	FINITURA PLATING	NOTE NOTE	CONFEZIONE STANDARD STANDARD PACKING QUANTITY
94030-5010	OTTONE BRASS	GREGGIO/ UNPL*	---	15.000 pz. in 3 bobine per scatola 15.000 pcs. per box in 3 reels
94030-5011		STAGNATO/ TIN*	---	
94030-5018		STAGNATO/ TIN*	AVVOLTO CON CARTA INTERMEDIA WOUND WITH INTERLEAF PAPER	

SPQ : 15000 pcs.

Std descr.: FEM TERM 6.3/0.8 RA BRS (insert plating *) 1-2.5

EC NO: Z2005-0030 DRWN:FGOTTARD 2004/09/23 CHKD:RSANDANO 2004/09/23 APPR:GZUIN 2004/09/23	QUALITY SYMBOLS	GENERAL TOLERANCES (UNLESS SPECIFIED)	DIMENSION STYLE MM ONLY	SCALE 5:1	DESIGN UNITS METRIC	FIRST ANGLE PROJECTION																		
	▽=0 □=0	<table border="1"> <tr> <th></th> <th>mm</th> <th>INCH</th> </tr> <tr> <td>4 PLACES</td> <td>± ---</td> <td>± ---</td> </tr> <tr> <td>3 PLACES</td> <td>± ---</td> <td>± ---</td> </tr> <tr> <td>2 PLACES</td> <td>± 0.1</td> <td>± ---</td> </tr> <tr> <td>1 PLACE</td> <td>± 0.2</td> <td>± ---</td> </tr> <tr> <td colspan="3">ANGULAR ± 2 °</td> </tr> </table>		mm	INCH	4 PLACES	± ---	± ---	3 PLACES	± ---	± ---	2 PLACES	± 0.1	± ---	1 PLACE	± 0.2	± ---	ANGULAR ± 2 °			DRAWN BY FGOTTARD DATE 1990/01/17 CHECKED BY DATE	TITLE	QIK KONNECT FLAG 6.3X0.8 WIRE RANGE 1 - 2.5 MMQ	
		mm	INCH																					
	4 PLACES	± ---	± ---																					
3 PLACES	± ---	± ---																						
2 PLACES	± 0.1	± ---																						
1 PLACE	± 0.2	± ---																						
ANGULAR ± 2 °																								
DESCRIPTION	APPROVED BY MPREVIAT DATE 1990/01/17	MOLEX INCORPORATED		DOCUMENT NO.	SHEET NO.																			
REV	DRAFT WHERE APPLICABLE MUST REMAIN WITHIN DIMENSIONS	SEE CHART		SD-94030-037	1 OF 1																			

9 8 7 6 5 4 3 2 1