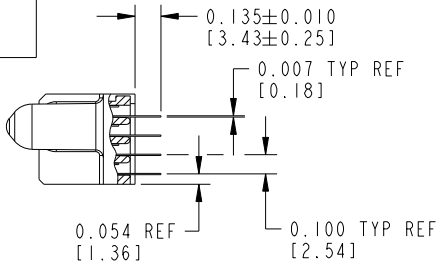


Tous droits strictement réservés. Reproduction ou communication a des tiers interdite sous quelque forme que ce soit sans autorisation écrite du propriétaire. Propriété de c FCI. Droits de reproduction FCI.

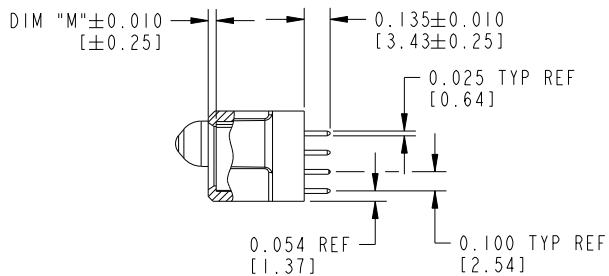


All rights strictly reserved. Reproduction or issue to third parties in any form whatever is not permitted without written authority from the proprietor. Property of FCI. Copyright FCI.

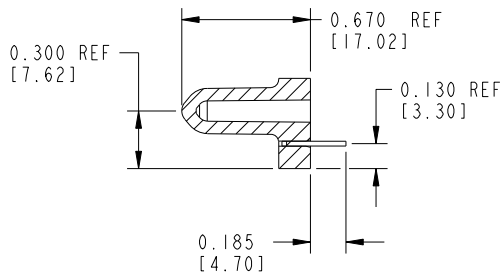
PRODUCT NUMBER
51750-002--
NOTE: 3



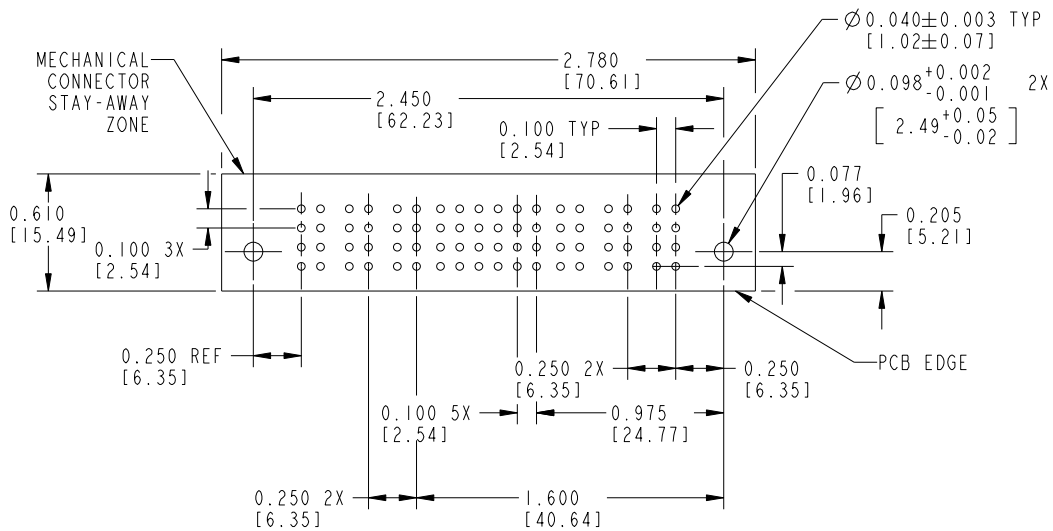
SECTION A-A



SECTION B-B



SECTION C-C



RECOMMENDED PCB LAYOUT

mat'l code		NOTE 2		tolerances unless otherwise specified		CUSTOMER		FCI	
lfr	ecn no.	dr	date	linear	.XX±.01/0.X±0.3	COPY		www.fciconnect.com	
D				projection	.XXX±.005/0.XX±0.13	⊕ ↗		title 3P + 24S + 3P	
				angles	.XXXX±.0020/0.XXX±0.051	INCH/MM		VERTICAL RECEPTACLE W/GUIDE PIN	
				dr	E. KORFF 12-19-00	scale 1:1		product family PwrBlade code 213	
				enrg	J. DODDS 12-19-00	A		size dwg no 51750-002 sheet 2	
				chr	J. DODDS 12-19-00				
				appd	J. DODDS 12-19-00				
sheet index	revision sheet								

Pro/E

PDM: Rev: D

STATUS: Released

Printed: Dec 20, 2010

1 | 2

3

4

A

A

B

B

1 | 2

4



PRODUCT NUMBER
51750-002--
NOTE: 3

NOTES:

1. DIMENSIONS AND TOLERANCES ARE IN ACCORDANCE WITH ASME Y14.5M, 1994 UNLESS OTHERWISE

CONNECTOR NOTES:

2. HOUSING MATERIAL: UL 94 V-0 GLASS FILLED HIGH-TEMP THERMOPLASTIC
POWER CONTACT MATERIAL: COPPER ALLOY
SIGNAL PIN MATERIAL: COPPER ALLOY

3. SEE ITEM 5 & 6 IN PRINT 10064183 FOR PLATING SPEC OF 51750-002 AND 51750-002LF RESPECTIVELY.

4. MANUFACTURER'S NAME, P/N, AND DATE CODE TO APPEAR ON THIS SURFACE.

5. PRODUCT SPECIFICATION GS-12-149. APPLICATION SPECIFICATION BUS-20-067.

PCB NOTES:

6. ALL DIMENSIONS ARE BASIC UNLESS OTHERWISE SPECIFIED.

7. ALL THROUGH HOLES ARE LOCATED WITH A TRUE POSITION OF .004 [0.10]

8. ALL HOLE DIAMETERS ARE FINISHED HOLE SIZE

9. $\varnothing 0.098$ [2.49] THROUGH HOLES ARE UNPLATED

10. $\varnothing 0.0453 \pm 0.0010$ [1.151 ± 0.025] DRILLED HOLES PLATED WITH 0.0003 [0.008] MIN SnPb OVER 0.001 [0.03] TO 0.003 [0.08] Cu PLATING TO ACHIEVE A $\varnothing 0.040 \pm 0.003$ [1.02 ± 0.07] HOLE.

11. A Δ SYMBOL WILL BE NEXT TO ANY DIMENSION, VIEW, OR NOTE WHICH HAS BEEN MODIFIED WITH THE CURRENT DRAWING REVISION.

mat'l code		NOTE 2		tolerances unless otherwise specified		CUSTOMER		FCI		www.fciconnect.com	
lfr	ecn no.	dr	date	linear	.XX±.01/0.X±0.3	COPY		title			
D					.XXX±.005/0.XX±0.13	projection		3P + 24S + 3P			
				angles	.XXX±.0020/0.XXX±0.051			VERTICAL RECEPTACLE W/GUIDE PIN			
					0°±2°	INCH/MM		product family		code	
		dr	E. KORFF	12-19-00				PwrBlade		213	
		engr	J. BROWN	TODAY'S DATE		scale		size		sheet	
		chr	X.XXXXX	mm/dd/yy		1:1		A		3	
		appd	J. DODDS	12-19-00				51750-002			
sheet index	revision sheet										