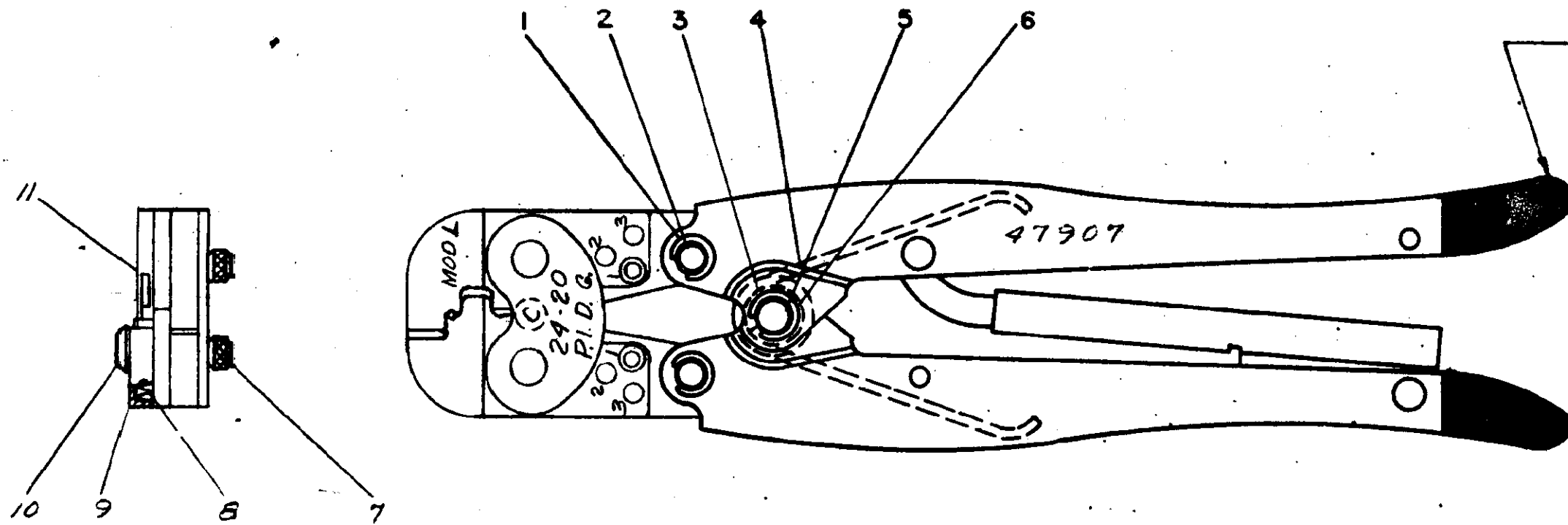


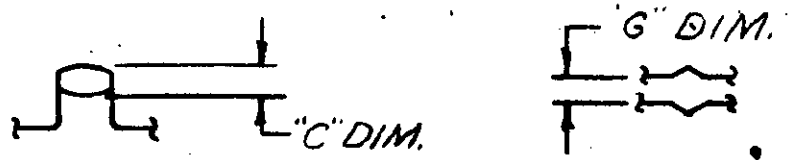
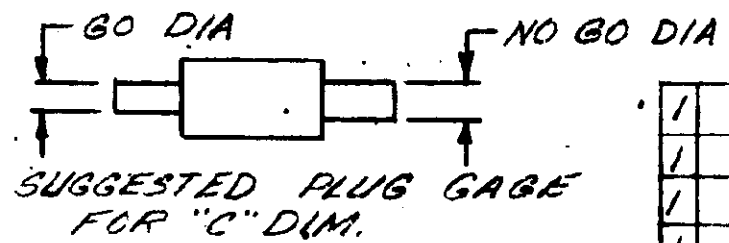
S



COLOR CODED:
WHITE

GAGE DIMENSIONS APPLY WHEN TOOL IS
BOTTOMED BUT NOT UNDER PRESSURE.

FOR REPLACEMENT OF PARTS OTHER THAN
LISTED, TOOL SHOULD BE RETURNED TO OUR
FACTORY TO INSURE PROPER CERTI-CRIMP
ADJUSTMENT.



1	303542	STOP	11
1	9-305927-1	SCREW	10
1	302994	STOP HOUSING	9
1	301201	SPRING	8
2	39207	PIN ADJUSTMENT	7
2	21045-6	RING - RETAINING	6
1	300449	PIN - RETAINING	5
1	39364	SPRING	4
1	39366	COLLAR	3
2	300432	PIN - RETAINING	2
4	21045-3	RING - RETAINING	1

GAGE DIMS.			
"C" DIM.		"G" DIM.	
GO	NO GO	GO	NO GO
.083	.095	.030	.050

NO.	REVISION	DATE	BY	CHK
1	REVISED	10-29-69	PL	ELR
2	REVISED	12-2-69	PL	ELR

NUMBER	DESCRIPTION	REQUIRED PER ASSEMBLY
47907	HAND TOOL ASSEMBLY	1

©1969 BY AMP INCORPORATED. ALL RIGHTS RESERVED.
AMP PRODUCTS COVERED BY PATENTS AND/OR PATENTS PENDING.

DR: *[Signature]* 10-29-69
CHK: *[Signature]* 12-2-69
APP: *[Signature]* 12-2-69

MATERIAL AND FINISH: +-----+

CLASS: +-----+

WIRE - RANGE - INSULATION: 24-20 +-----+
TYPE: C PRE-INSULATED DIAMOND GRP

TOLERANCE EXCEPT AS NOTED: ± .015 = 1" 0
SCALE: 1/2" = 1"
LOC: M
NO: B 47907
REV: L1

NAME: HAND TOOL ASSEMBLY MODL

DIMENSIONS IN INCHES DO NOT SCALE PRINT

AMP 1288-1

8 7 6 5 4 3 2 1