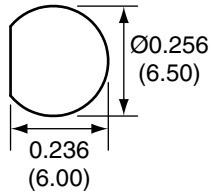
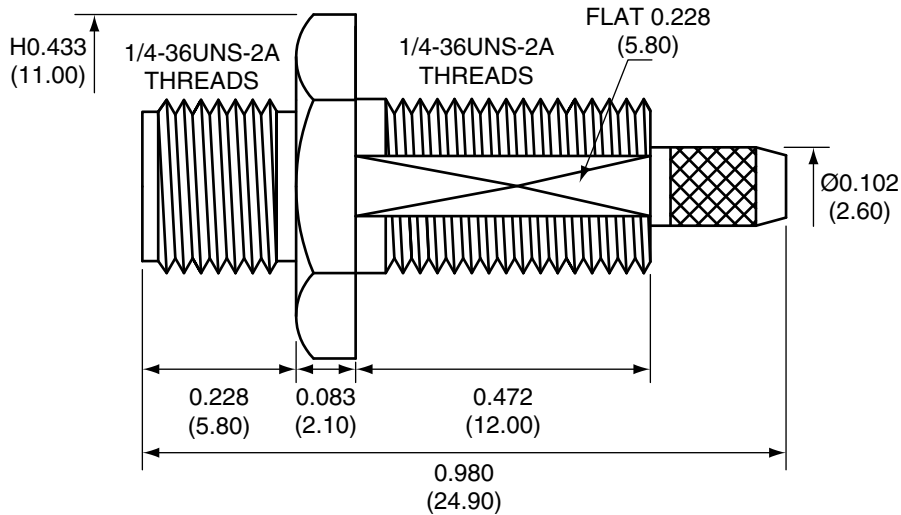


Description	Material	Finish
Body	Brass	Nickel
Pin	BE CU	Gold
Insulation	PTFE	N/A
Crimp Ring	Brass	Nickel
O Ring	SI Rubber	Rubber
Nut	Brass	Nickel
Washer	Brass	Nickel

**RECOMMENDED MOUNTING HOLE**

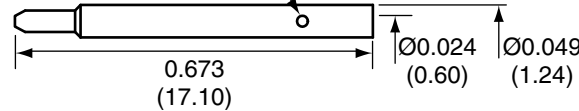


**SIDE VIEW**

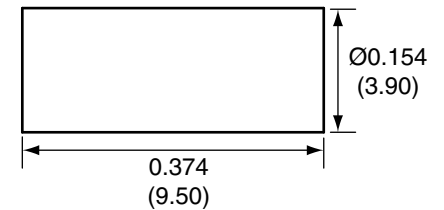


REVISIONS			
REV	DESCRIPTION	DATE	APPV
B	Updated footprint and dimensions; Added new title block	11-JUL-12	SAH

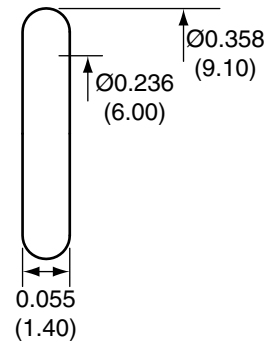
**PIN**  
Ø0.020 (0.50)



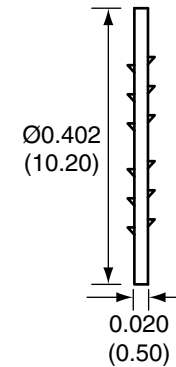
**CRIMP RING**



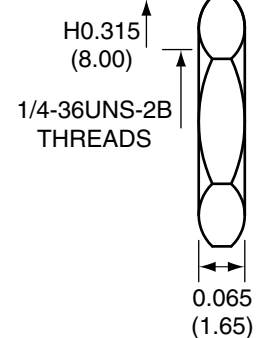
**O-RING**



**WASHER**



**NUT**



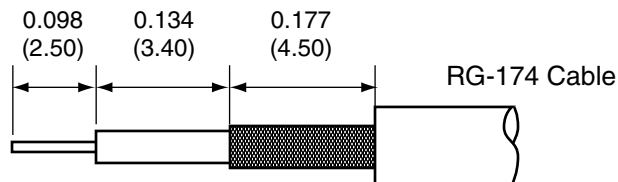
**CONREVSMA015 ASSEMBLY INSTRUCTIONS**

- Solder the pin to the center conductor.
- Insert the pin, center conductor, and insulation into the body.
- Wrap the braid around the tail of the body and crimp the ring with a 0.137" hex crimp tool (or one labeled for use with RG-174 cable).

**NOTES: (UNLESS OTHERWISE SPECIFIED)**

- ALL DIMENSIONS ARE IN INCHES [mm].
- DIMENSIONS APPLY AFTER FINISHING.
- MANUFACTURE TO BE COMPLIANT WITH EU RoHS DIRECTIVE.
- SAFETY BREAK ALL SHARP CORNERS AND EDGES .02 MAXIMUM.

**RECOMMENDED CABLE STRIPPING DIMENSIONS**



**WARNING:** THIS DRAWING CONTAINS PROPRIETARY INFORMATION THAT IS THE SOLE PROPERTY OF LINX TECHNOLOGIES, AND SHALL BE TREATED AS SUCH. NO DISCLOSURE OR REPRODUCTION OF THIS DOCUMENT IS PERMITTED, IN WHOLE OR IN PART, WITHOUT THE EXPRESS WRITTEN PERMISSION OF LINX TECHNOLOGIES OR ITS DESIGNATED AGENTS.

MATERIAL:	TOLERANCES: .020 [0.50]-.200 [5.00]= ±.008 [0.20] .200 [5.00]-1.200 [30.00]= ±.016 [0.40] 1.20 [30.0]-4.75 [120.0]= ±.024 [0.60] 4.75 [120.0]-12.40 [315.0]= ±.040 [1.0]	PROJECTION: 
	FINISH:	
	DRAWN: B.MURPHY	DT: 11-JUL-12
	ENGR: S.HOGAN	DT: 11-JUL-12

**Linx**

159 ORT LANE  
MERLIN, OR 97532

TITLE:  
**RP-SMA FEMALE BULKHEAD MOUNT CABLE  
END CRIMP WITH O-RING FOR RG174 CABLE**

SIZE <b>A</b>	DWG. NO. <b>CONREVSMA015</b>	REV <b>B</b>
SCALE: 2:1	DO NOT SCALE DRAWING	SHEET 1 OF 1