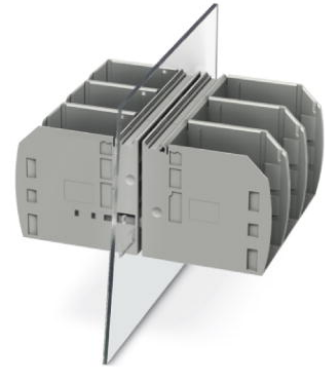



RWO 10

Order No.: 3056158

<http://eshop.phoenixcontact.de/phoenix/treeViewClick.do?UID=3056158>

Feed-through terminal block, Connection method: Bolt connection,
Load current : 309 A, Cross-section: 6 mm² - 150 mm², Connection
direction of the conductor to plug-in direction: 0 °, Width: 42.2 mm,
Color: gray

Commercial data	
GTIN (EAN)	 4 046356 427166
Note	Made-to-order
sales group	A420
Pack	5 pcs.
Customs tariff	85369010
Catalog page information	Page 66 (NTK-2010)

Product notes

WEEE/RoHS-compliant since:
06/24/2008



[http://
www.download.phoenixcontact.com](http://www.download.phoenixcontact.com)
Please note that the data given
here has been taken from the
online catalog. For comprehensive
information and data, please refer
to the user documentation. The
General Terms and Conditions of
Use apply to Internet downloads.

Technical data	
General	
Number of levels	1
Number of connections	2
Color	gray

Insulating material	PA
Inflammability class acc. to UL 94	V0

Dimensions

Width	42.2 mm
-------	---------

Technical data

Rated surge voltage	6 kV
Pollution degree	3
Surge voltage category	III
Insulating material group	I
Connection in acc. with standard	IEC 60947-7-1
Nominal current I_N	309 A
Nominal voltage U_N	1000 V

Connection data

Conductor cross section solid min.	6 mm ²
Conductor cross section solid max.	150 mm ²
Conductor cross section AWG/kcmil min.	10
Conductor cross section AWG/kcmil max	250 kcmil
Connection method	Bolt connection
Screw thread	M10
Tightening torque, min	10 Nm
Tightening torque max	20 Nm

Accessories

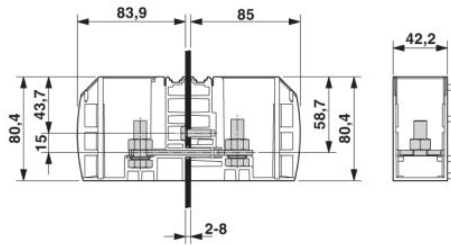
Item	Designation	Description
General		
3075197	RW 10-F	Flange cover
0820222	ZB 16,3:UNPRINTED	Terminal marking

Marking

0828295	TMT (EX9,5)R	Terminal marking with 9.5 mm strip height, continuous, without color print, for all terminals with ZB or ZBF groove, can be labeled using a thermal transfer printer, 1 roll = 50 m
---------	--------------	---

Diagrams/Drawings

Dimensioned drawing



Address

PHOENIX CONTACT Inc., USA
586 Fulling Mill Road
Middletown, PA 17057, USA
Phone (800) 888-7388
Fax (717) 944-1625
<http://www.phoenixcon.com>



© 2011 Phoenix Contact
Technical modifications reserved;