

# MINI QUARTER TURN WING KNOB



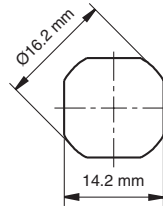
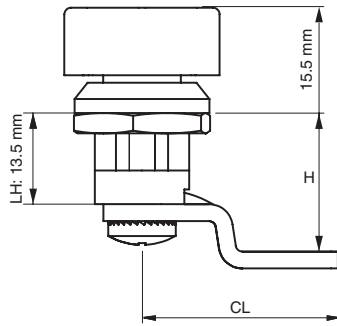
\*Example with cam. Cam sold separately.

### Specifications

- Material:
  - Housing: Zinc Alloy (Zamak) DIN-EN 1774-ZnAl4Cu1 or PA6 GFR 30
  - Knob: Zinc Alloy (Zamak) DIN-EN 1774-ZnAl4Cu1 or PA6 GFR 30
  - Cam: Steel

### Features

- Wing operates as lock and serves as knob
- Sealing washer not supplied
- Applications: Electric panels, machinery covers

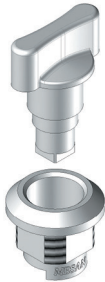


Cut Out

Zinc Alloy (Zamak) / Chrome

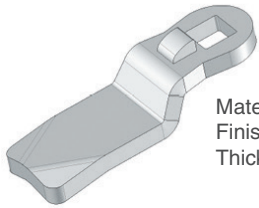
Zinc Alloy (Zamak) / Black Coated

Nylon

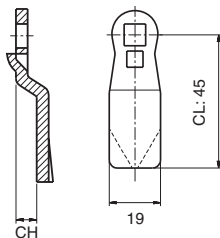


Item Number				
Zinc Alloy / Chrome	Zinc Alloy / Black	Nylon / Black	Driver	Cam
1661100	1661200	1662000	Wing Knob	Select Cam Below

### Steel Cam



Material: Steel  
Finish: Zinc plated  
Thickness: 4 mm



Item Number	CH (mm)	CL (mm)	H (mm)
30403084	0	33	13.5
30403184	0	25	13.5
30403183	6	25	19.5
30403085	7	30	20.5
30403196	-6	25	7.5